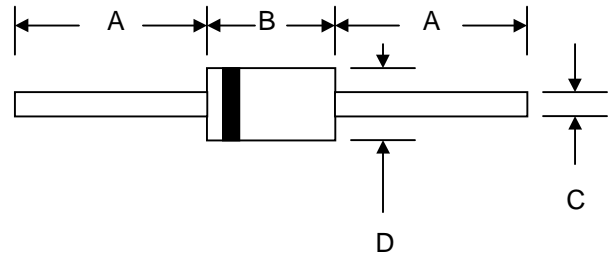


Features

- Diffused Junction
- Low Forward Voltage Drop
- High Current Capability
- High Reliability
- High Surge Current Capability



Mechanical Data

- Case: Molded Plastic
- Terminals: Plated Leads Solderable per MIL-STD-202, Method 208
- Polarity: Cathode Band
- Weight: 1.2 grams (approx.)
- Mounting Position: Any
- Marking: Type Number

DO-201AD		
Dim	Min	Max
A	25.4	—
B	8.50	9.50
C	1.20	1.30
D	5.0	5.60
All Dimensions in mm		

Maximum Ratings and Electrical Characteristics @ $T_A=25^\circ\text{C}$ unless otherwise specified

Single Phase, half wave, 60Hz, resistive or inductive load.
 For capacitive load, derate current by 20%.

Characteristic	Symbol	SF31	SF32	SF33	SF34	SF35	SF36	SF37	Unit	
Peak Repetitive Reverse Voltage	V_{RRM}	50	100	150	200	300	400	600	V	
Working Peak Reverse Voltage	V_{RWM}									
DC Blocking Voltage	V_R									
RMS Reverse Voltage	$V_{R(RMS)}$	35	70	105	140	210	280	420	V	
Average Rectified Output Current (Note 1) @ $T_A = 50^\circ\text{C}$	I_O	3.0							A	
Non-Repetitive Peak Forward Surge Current 8.3ms Single half sine-wave superimposed on rated load (JEDEC Method)	I_{FSM}	125							A	
Forward Voltage @ $I_F = 3.0\text{A}$	V_{FM}	0.95			1.3		1.7		V	
Peak Reverse Current @ $T_A = 25^\circ\text{C}$ At Rated DC Blocking Voltage @ $T_A = 100^\circ\text{C}$	I_{RM}	5.0				100				μA
Reverse Recovery Time (Note 2)	t_{rr}	35							nS	
Typical Junction Capacitance (Note 3)	C_j	100				80				pF
Operating Temperature Range	T_j	-65 to +125							$^\circ\text{C}$	
Storage Temperature Range	T_{STG}	-65 to +150							$^\circ\text{C}$	

*Glass passivated forms are available upon request

- Note: 1. Leads maintained at ambient temperature at a distance of 9.5mm from the case
 2. Measured with $I_F = 0.5\text{A}$, $I_R = 1.0\text{A}$, $I_{RR} = 0.25\text{A}$. See figure 5.
 3. Measured at 1.0 MHz and applied reverse voltage of 4.0V D.C.

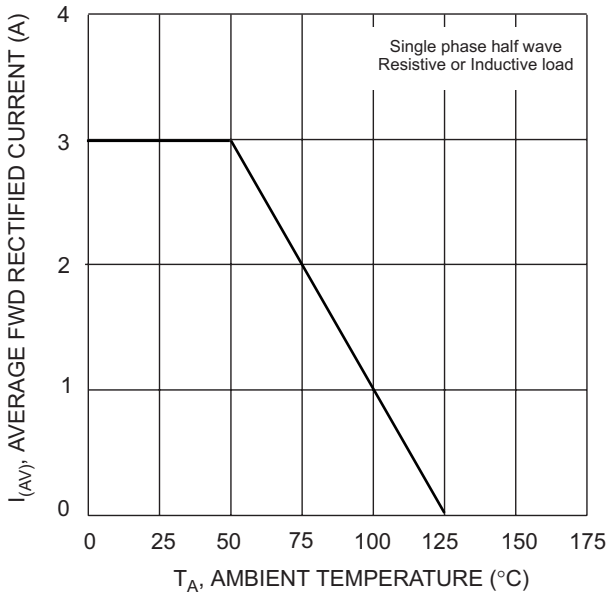


Fig. 1 Forward Current Derating Curve

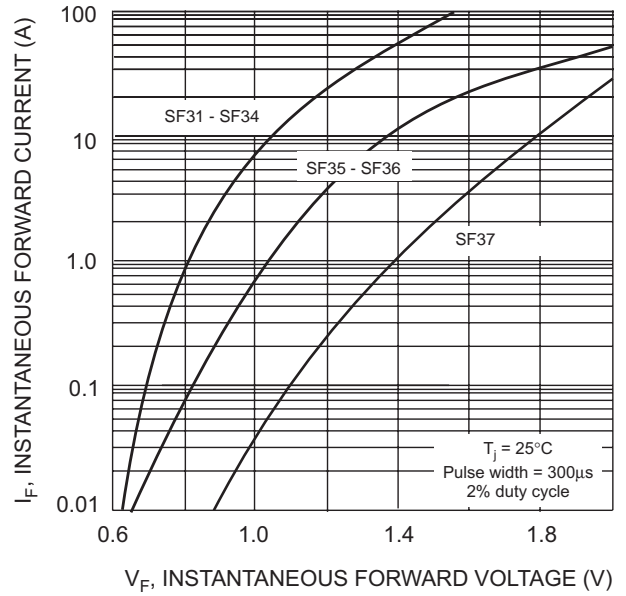


Fig. 2 Typical Forward Characteristics

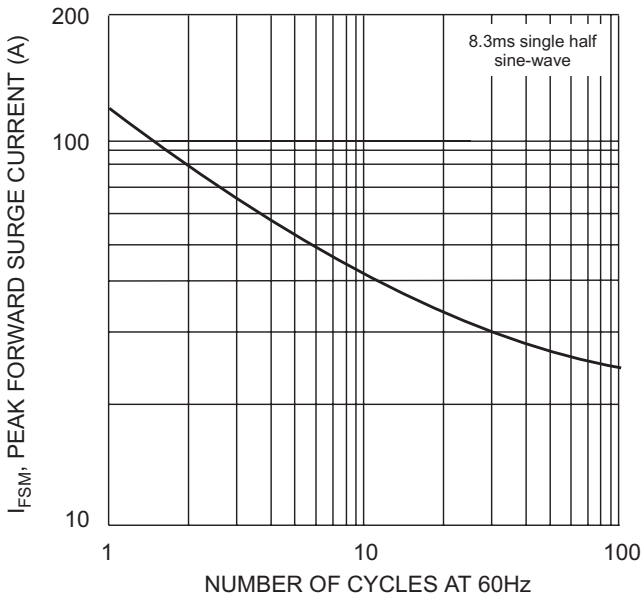


Fig. 3 Peak Forward Surge Current

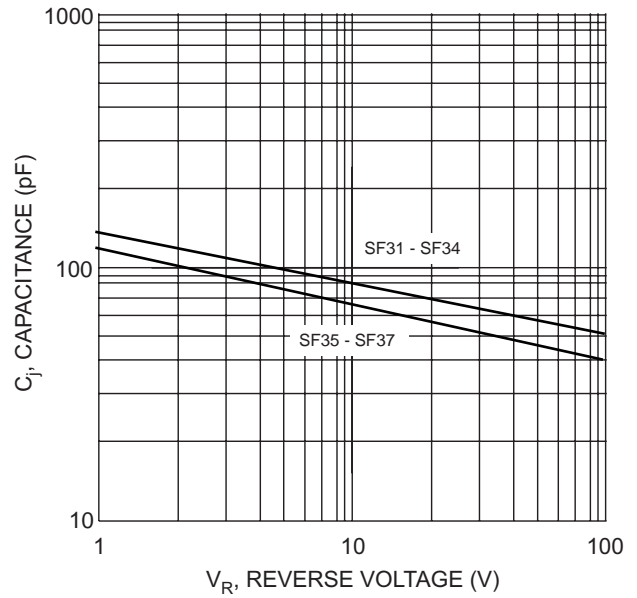
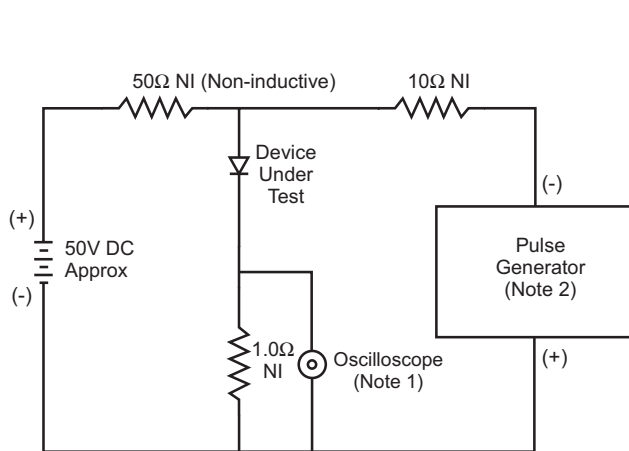
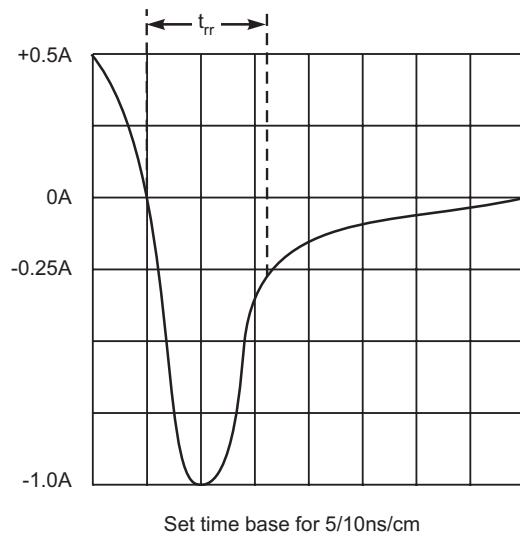


Fig. 4 Typical Junction Capacitance



- Notes:
1. Rise Time = 7.0ns max. Input Impedance = 1.0MΩ, 22pF.
 2. Rise Time = 10ns max. Input Impedance = 50Ω.

Fig. 5 Reverse Recovery Time Characteristic and Test Circuit



Set time base for 5/10ns/cm

ORDERING INFORMATION

Product No.◆	Package Type	Shipping Quantity
SF31-T3	DO-201AD	1200/Tape & Reel
SF31-TB	DO-201AD	1200/Tape & Box
SF31	DO-201AD	500 Units/Box
SF32-T3	DO-201AD	1200/Tape & Reel
SF32-TB	DO-201AD	1200/Tape & Box
SF32	DO-201AD	500 Units/Box
SF33-T3	DO-201AD	1200/Tape & Reel
SF33-TB	DO-201AD	1200/Tape & Box
SF33	DO-201AD	500 Units/Box
SF34-T3	DO-201AD	1200/Tape & Reel
SF34-TB	DO-201AD	1200/Tape & Box
SF34	DO-201AD	500 Units/Box
SF35-T3	DO-201AD	1200/Tape & Reel
SF35-TB	DO-201AD	1200/Tape & Box
SF35	DO-201AD	500 Units/Box
SF36-T3	DO-201AD	1200/Tape & Reel
SF36-TB	DO-201AD	1200/Tape & Box
SF36	DO-201AD	500 Units/Box
SF37-T3	DO-201AD	1200/Tape & Reel
SF37-TB	DO-201AD	1200/Tape & Box
SF37	DO-201AD	500 Units/Box

Products listed in **bold** are WTE **Preferred** devices.

◆T3 suffix refers to a 13" reel. TB suffix refers to Ammo Pack.

Shipping quantity given is for minimum packing quantity only. For minimum order quantity, please consult the Sales Department.

Won-Top Electronics Co., Ltd (WTE) has checked all information carefully and believes it to be correct and accurate. However, WTE cannot assume any responsibility for inaccuracies. Furthermore, this information does not give the purchaser of semiconductor devices any license under patent rights to manufacturer. WTE reserves the right to change any or all information herein without further notice.

WARNING: DO NOT USE IN LIFE SUPPORT EQUIPMENT. WTE power semiconductor products are not authorized for use as critical components in life support devices or systems without the express written approval.

Won-Top Electronics Co., Ltd.

No. 44 Yu Kang North 3rd Road, Chine Chen Dist., Kaohsiung, Taiwan

Phone: 886-7-822-5408 or 886-7-822-5410

Fax: 886-7-822-5417

Email: sales@wontop.com

Internet: http://www.wontop.com

We power your everyday.